

013901
 RECEIVED
 LARAMIE COUNTY
 CHEYENNE, WY.

'86 AUG 19 AM 8 32

CERTIFIED LAND CORNER RECORDATION

DESCRIPTION OF CORNER EVIDENCE FOUND, AND ORIGINAL RECORD (If known)

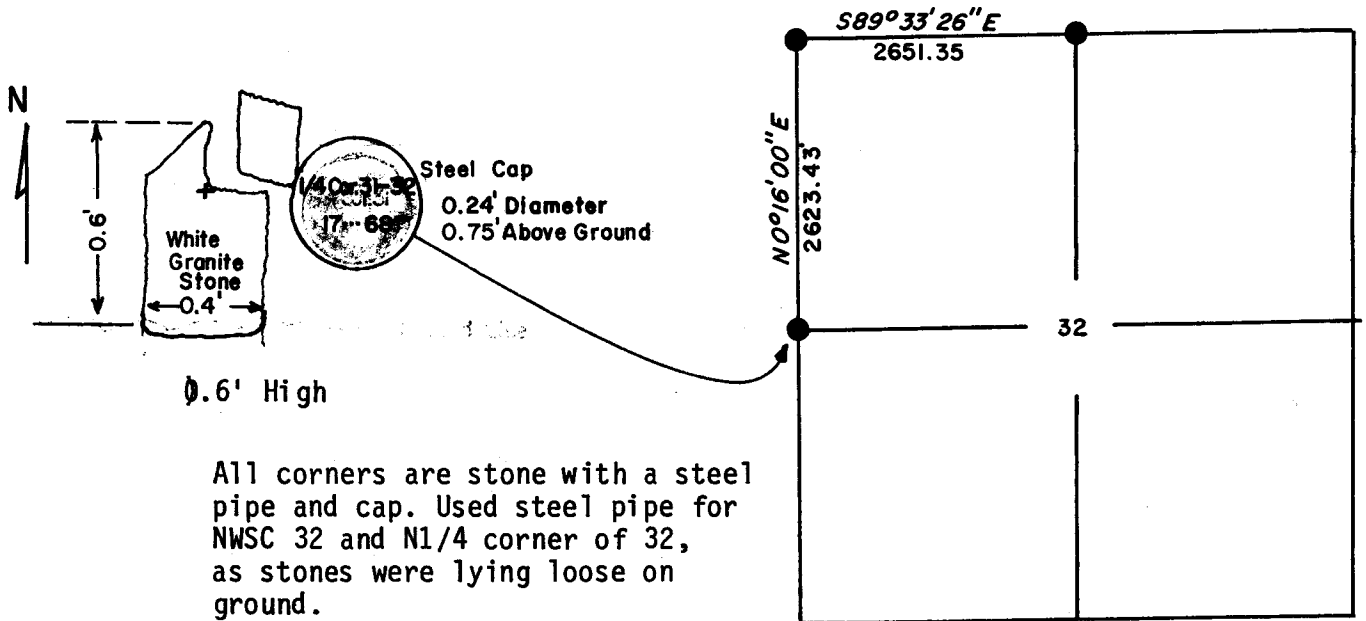
West 1/4 Corner of Section 32, T17N, R68W. of the 6th. P.M.
 Found: Set stone and steel pipe with cap marked as shown below.
 Original Record: Set a granite boulder 16x8x4 for 1/4 Sec. Cor

DESCRIPTION OF MONUMENT AND ACCESSORIES ESTABLISHED TO PERPETUATE THE ORIGINAL LOCATION OF THIS CORNER:

None established..

SKETCH, WITH COURSE AND DISTANCE TO ADJACENT CORNER IF DETERMINED IN THIS SURVEY. (May Sketch or Paste Reproduction on Reverse Side.)

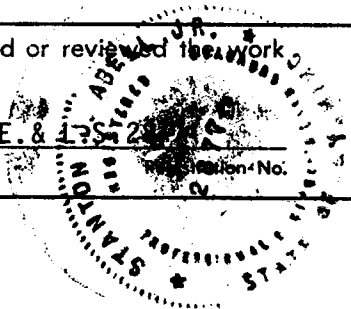
Basis of Bearing: Solar observation taken at W1/4 corner of Section 32..



I, Stanton J. Abell Jr. certify that I have carefully performed or reviewed the work done on the diagrammed corner as reported on this recordation form and approve the same.

Stanton J. Abell Jr.
 Signature of Surveyor

P.E. & L.S. No. 1322



STATE OF WYOMING,
 Office of Clerk and Recorder,
 County of Laramie

This "corner record" was filed for record on the 19 day of August, 1986, was noted on the cross-index plat and is assigned page No. _____, in book No. _____

Frank C. Whitehead
 County Official

Cross Index No. <u>X 5</u>	T. <u>17</u>	R. <u>68</u>	Mer.
_____	T. _____	R. _____	Mer.
_____	T. _____	R. _____	Mer.
_____	T. _____	R. _____	Mer.
_____	T. _____	R. _____	Mer.
_____	T. _____	R. _____	Mer.
_____	T. _____	R. _____	Mer.

BOOK 1232

X 5 T 17 R 68

838